



imie

GENERAL & LARGE MARKETS
JUNE 2025

imie

10.6%

Year-on-Year change
2,116 puntos

General Index

1.1% Monthly variation
55.3% From minimum
-8.6% From peak

11.2%

YoY change

2,454 points

PROVINCIAL CAPITALS & MAIN CITIES

8.9%

YoY change

2,114 points

METROPOLITAN AREAS

9.7%

YoY change

2,234 points

MEDITERRANEAN COAST

15.9%

YoY change

2,362 points

BALEARIC & CANARY ISLANDS

8.3%

YoY change

1,786 points

OTHER MUNICIPALITIES

1.2% 64.1% -4.0%
monthly variation from minimum from peak

1.1% 55.4% -13.3%
monthly variation from minimum from peak

1.0% 48.8% -18.2%
monthly variation from minimum from peak

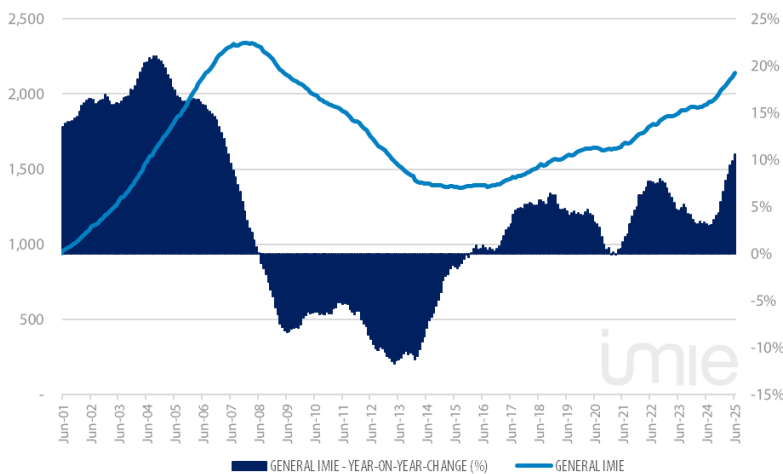
1.0% 71.1% 16.6%
monthly variation from minimum from peak

1.1% 34.4% -20.8%
monthly variation from minimum from peak

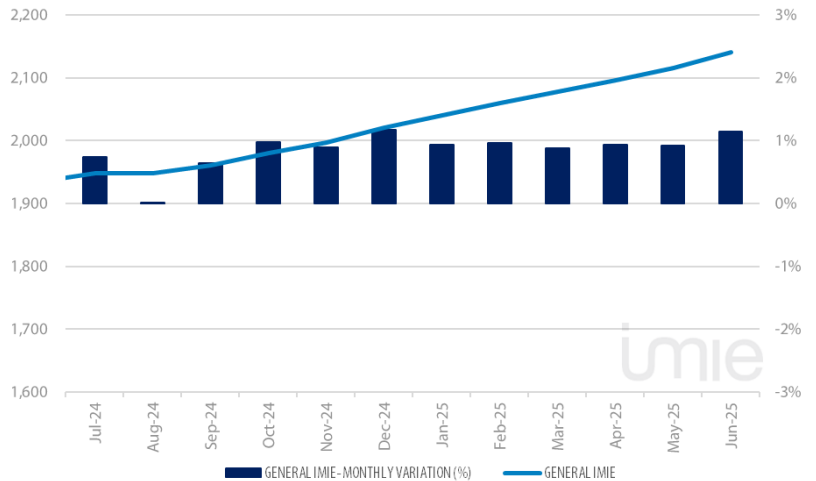
Tinsa IMIE General & Large Markets housing price index, based on valuations of finished homes (new and resale) by Tinsa, takes a monthly reading of year-on-year property values and their level compared to 2001 (base point of 1,000).

Historical evolution of the General Index

GENERAL INDEX AND YEAR-TO-YEAR CHANGE



MONTHLY VARIATION (LAST 12 MONTHS)

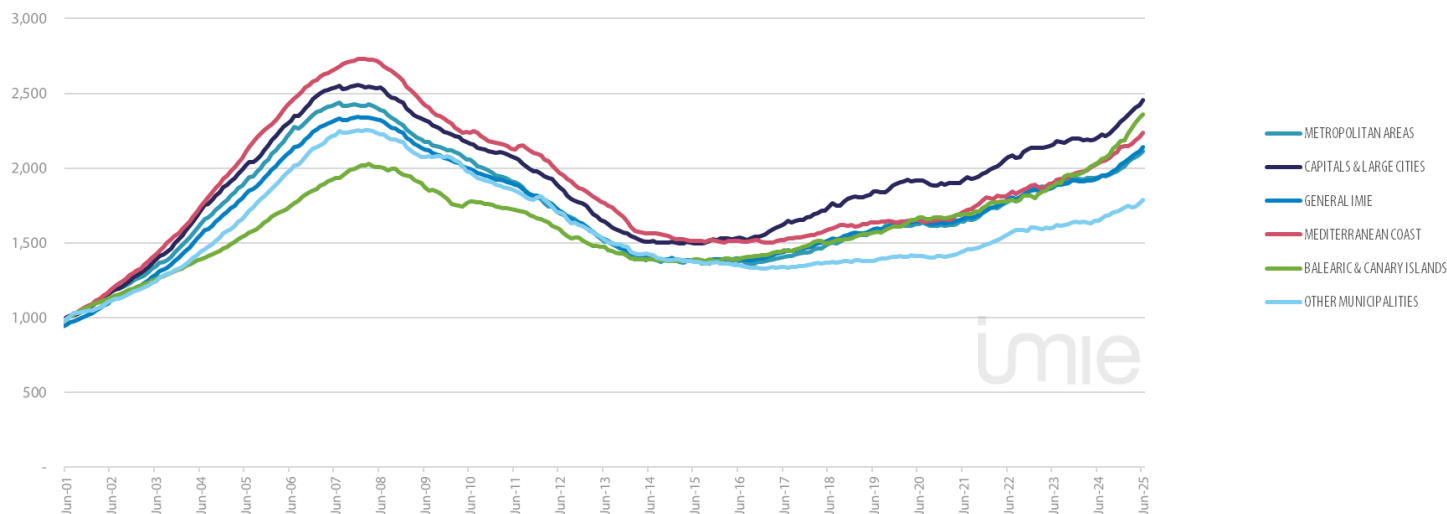


Market Snapshot

YoY change (except net online available properties, Euribor interest rate & doubtful loan rate)

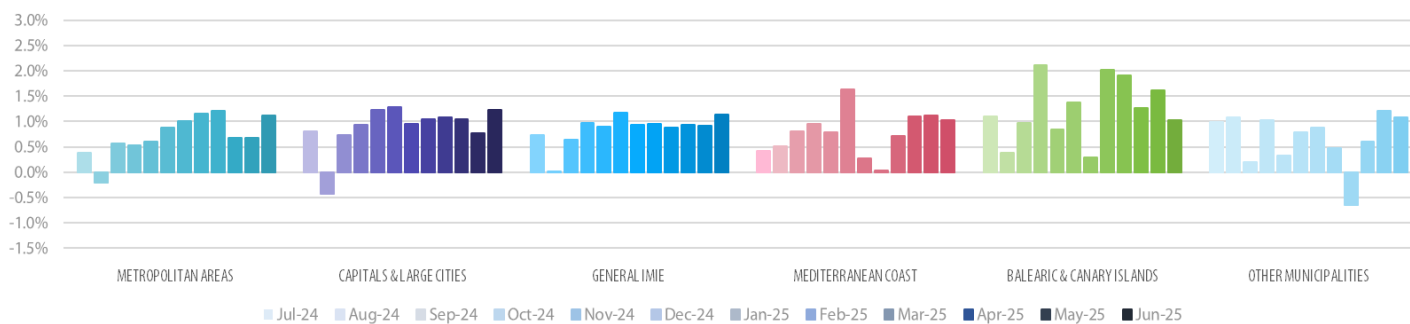
PROPERTY SALES	BUILDING LICENSES	NET ONLINE AVAILABLE PROP. (QUARTERLY CHANGE)	MORTGAGES	GENERAL INDEX IMIE	IPC	EURIBOR (rate)	DOUBTFUL LOAN RATE	CONTRIBUTORS TO SOCIAL SECURITY	UNEMPLOYMENT RATE
2.3%	-19.8%	-0.93%	14.3%	10.6%	2.2%	2.08%	2.40%	2.2%	-6.1%
APR	APR	Q2 2025	APRR	JUN	JUN	JUN	Q4 2024	JUN	JUN

Comparative changes in indexes



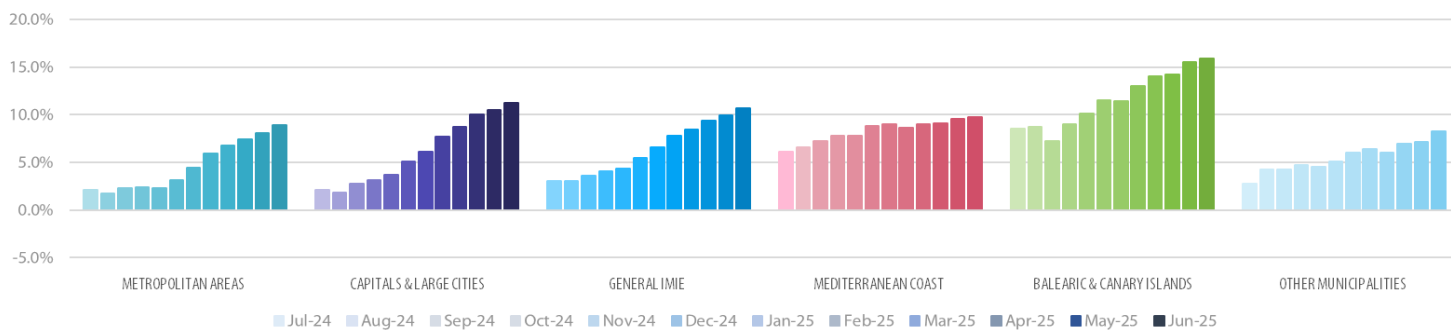
Monthly variation

LAST 12 MONTHS

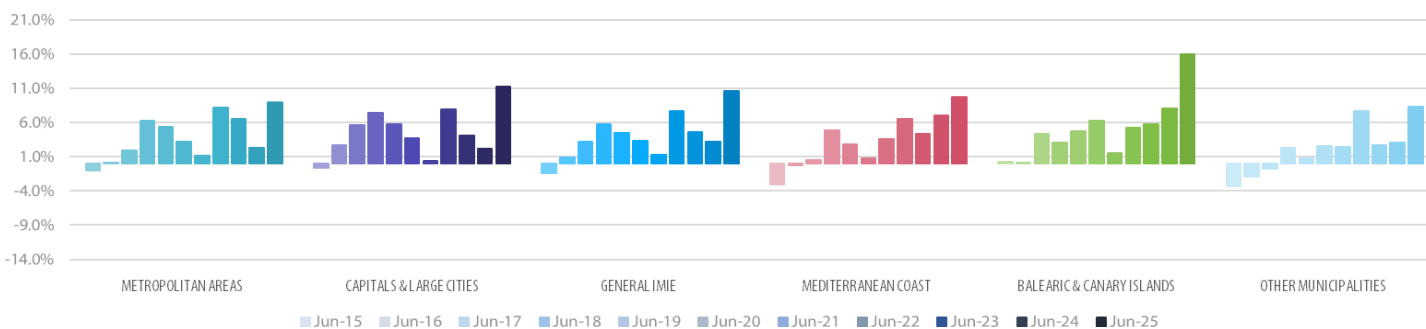


Year-on-Year change

LAST 12 MONTHS



LAST 10 YEARS



Main Property & Economic indicators

Property indicators



SALES

Property transactions (new and second hand included).

	APR 2025	PREVIOUS MONTH
Year-on year change	2.3%	40.0%
Total	54,318	62,808
Year- to date change*	15.8%	20.5%

Source: In-house and main online portals
(*): From January compared to the same period last year.



BUILDING LICENCES

Building licences issued by the Technical Architects' Association

	APR 2025	PREVIOUS MONTH
Year-on-year change	-19.8%	64.5%
Total	9,178	13,230
Year-to-date change*	23.6%	43.3%

Source: Spanish Ministry of Transport, Mobility & Urban Agenda.
(*): From January compared to the same period last year.



AVAILABLE PROPERTIES ON ONLINE PORTALS

Net available property advertised on main portals

	Q2 2025	PREVIOUS TRI.
Total	510,473	515,247
Year-on-year change	-17.42%	-21.11%

Source: In-house and main online portals.



MORTGAGES

Number of mortgage loans approved

	APR 2025	PREVIOUS MONTH
Year-on-year change	14.3%	44.4%
Total	39,176	42,831
Year-to-date change*	18.5%	20.0%

Source: Spanish Institute of Statistics (INE).
(*): From January compared to the same period last year.



GENERAL IMIE

Changes in average Price per m² for Tinsa-valued properties

	JUN 2025	PREVIOUS MONTH
Year-to-year change	10.6%	9.9%
From peak	-8.6%	-9.7%

Source: Tinsa.

Economic indicators



CPI

Consumer Price Index

	JUN 2025	PREVIOUS MONTH
Annual rate	2.2%	1.9%

Source: Spanish Institute of Statistics (INE).



EURIBOR

Average interest rate offered by banks and used as reference for mortgage loans

	JUN 2025	PREVIOUS MONTH
Monthly rate	2.08%	2.08%

Source: Bank of Spain



DOUBTFUL LOAN RATE*

Mortgage loans considered to be at risk of default

	DEC 2024	PREVIOUS QTR
Quarterly rate	2.40%	2.46%

Source: Spanish Mortgage Association (AHE)
*Household debt for property purchase.



CONTRIBUTORS TO SOCIAL SECURITY

Number registered as employed on the last day of the month

	JUN 2025	PREVIOUS MONTH
Year-to-year change	2.2%	2.2%
Total	21,861,095	21,784,375

Source: Ministry of Employment.



UNEMPLOYMENT RATE

Number of registered unemployed

	JUN 2025	PREVIOUS MONTH
Year-to-year change	-6.1%	-5.9%
Número absoluto	2,454,963	2,454,883

Source: Ministry of Employment.